

Observation- Entering/Viewing Vital Signs



This Quick Reference Guide will explain how to:

- Vital Signs can be entered into the EMR using any of three methods

First Method: The Observation Vital Signs (Powerform)

1. Click on **Observation Chart** under the Table of Contents (TOC)

Observation Chart


2. If no Observations have been entered then the view on the right will open. If Observations have been previously recorded then the view shown below (in 4.) will open.

▼ Respiratory Rate Add
No results found
▼ SpO2 Add
No results found
▼ Oxygen Add
No results found
▼ Blood Pressure (SBP is the trigger) Add Orthostatic
No results found
▼ Heart Rate Add
No results found
▼ Temperature Add
No results found
▼ Level of Consciousness Add
No results found
▼ Pain Score Add

Click [Add](#) anywhere on the vital signs component (e.g. - Respiratory Rate, SpO2, Blood Pressure, Heart Rate, etc.) to start recording observations

3. The **Observation Vital Signs Powerform** opens and the clinician records in the appropriate fields.

Note: All fields do not need to be populated.

Tick  on the top-left corner to complete and save the record.

Observation Vital Signs

Blood Observations Start Stop Q15

Comments [Intervention] Yes No

Temporal DegC Tympanic DegC

Axillary DegC

Heart Rate bpm

Respiratory Rate br/min Respiratory Distress

Systolic/Diastolic BP mmHg / mmHg Mean Arterial Pressure

O2 Saturation % O2 Delivery Room air CPAP
 Nasal prongs BiPAP
 Hudson mask LMA
 Venturi adapter T-Piece
 Humidification Ventilator
 Nonrebreather T-Bag
 Tracheostomy mask Other

O2 Flow Rate L/min

FiO2 %

Conscious State

Numeric Pain Score at Rest

Sedation Score (Adult) 0 = Wide awake 1 = Easy to rouse, can stay awake 2 = Easy to rouse, cannot stay awake 3 = Difficult to rouse

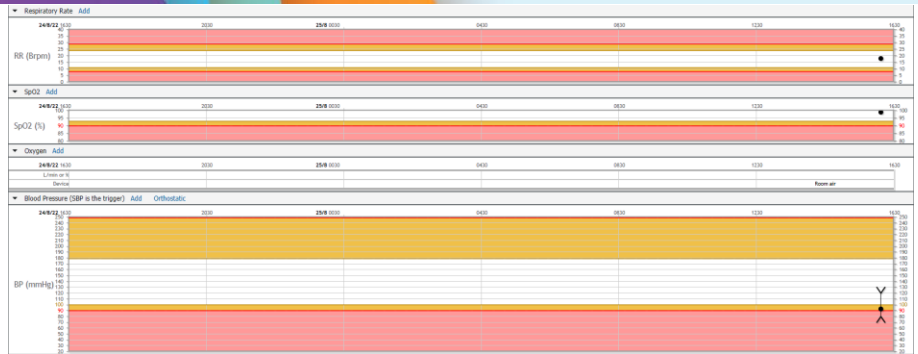
Level of Sedation (Paed)



Observations – Entering/Viewing Vital Signs

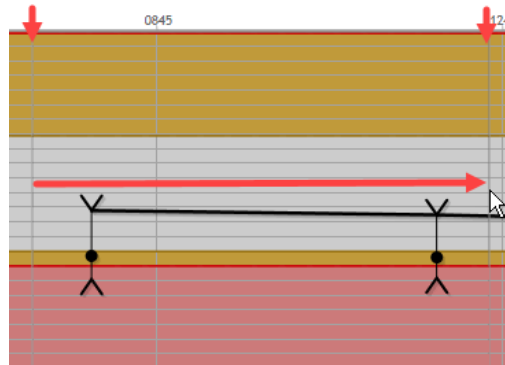
- Vital signs are charted and graphed in the observation chart as seen here →

Note: Users can hover the mouse pointer over a dot to display the observation details



Zooming in:

Hold left click and drag across a time period along the observation chart to zoom into that time period.



Second Method: Interactive View and Fluid Balance Chart

- Choose **Interactive View** from the TOC
- Go to **Adult Quick View** → **Vital Signs** and manually enter the vital signs into the appropriate fields
- Green Tick ✓ to save the results into the EMR

Note: Results entered will also populate the **Observation Vital Signs** chart and vice versa.

The screenshot shows the 'Interactive View and Fluid Balance' menu on the left with 'Vital Signs' highlighted. The main window displays the 'Vital Signs' data entry form with the following values:

Item	Value	Unit
Respiratory Rate	16	br/min
Respiratory Distress		
SpO2	96	%
Oxygen Delivery		
Oxygen Delivery - High Flow		
Oxygen Flow Rate		L/min
FIO2		
SBP/DBP Cuff	120/80	mmHg
Mean Arterial Pressure, Cuff Calc		mmHg
Peripheral Pulse Rate		bpm
Heart Rate Monitored		bpm
Temperature Axillary		DegC
Temperature Skin		DegC

Third Method: Via BMDI

Vital Signs may be entered into the EMR by uploading from a device employing a Biomedical Device Interface (BMDI). Currently devices employing a BMDI are the Welch Allyn machines and there are plans to introduce other monitoring equipment to the system. See their individual QRGs for instructions.