

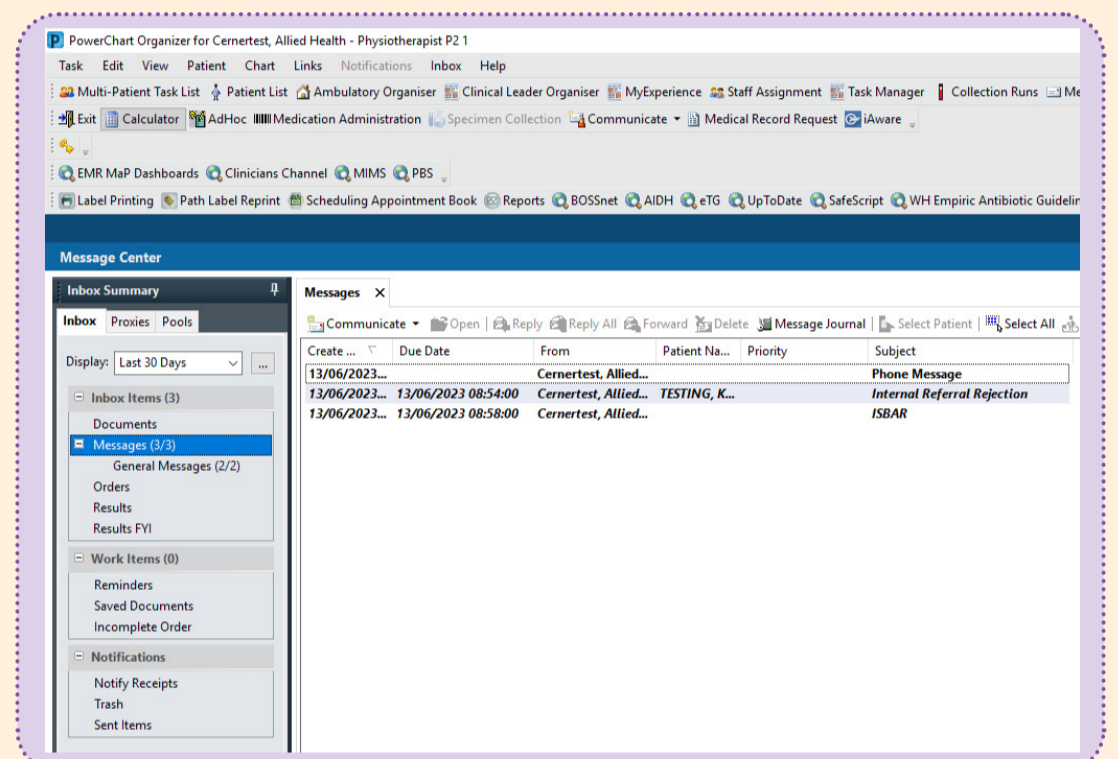


# EMR PHASE 2.1 ALLIED HEALTH KEY MESSAGES

## Message Centre

### USE MESSAGE CENTRE TO:

- ▶ Receive messages relating to patient phone enquiries or scheduling enquiries sent by clinic staff
- ▶ Communicate patient related information/tasks with other clinicians or administrative staff
- ▶ Document the content or outcome of phone calls to/from patients/carers



- These messages will also appear in the patient file, you can opt out of publishing them as appropriate
- Set reminders to review results or to follow-up patient specific tasks
- Add yourself to message centre groups that will relate to any outpatient or community clinics/areas you work in, to receive messages relating to these
- Messages for current inpatient workflows will continue unchanged

To find out more about EMR Phase 2.1 please visit the Digital Health information site - [digitalhealth.wh.org.au](https://digitalhealth.wh.org.au)

