

FirstNet – ED Real Time Dashboard



Digital Health
CONNECTING BEST CARE

Digital Health
Quick Reference Guide

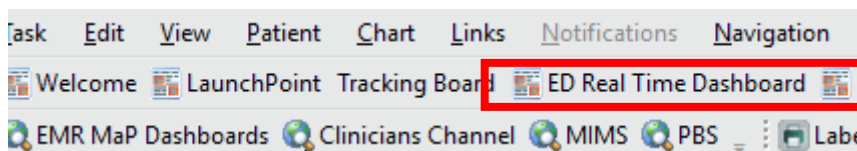
This Quick Reference Guide will explain how to:

Look at the components of the ED Real Time Dashboard

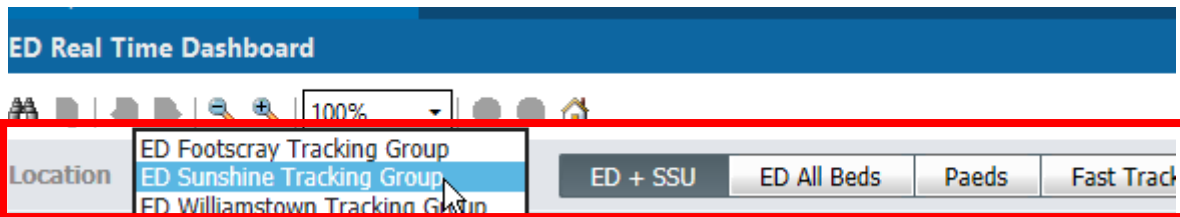
Overview

ED Real Time Dashboard is an application in FirstNet that measures various real time metrics of Emergency Department workload and displays them in real time, updating every 60 seconds. It displays this data using multiple components that can be maximised to display more detailed information.

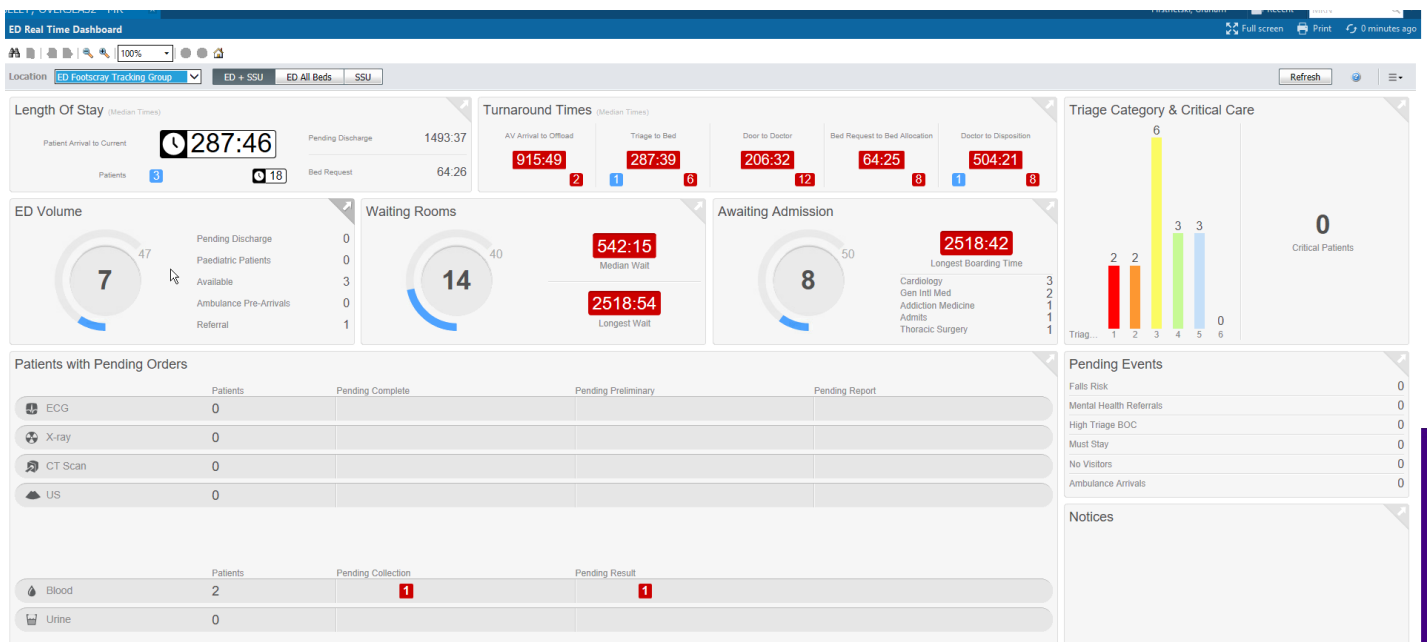
1. Sign into FirstNet and click on ED Real Time Dashboard in the toolbar



2. Click on the Location drop down menu to change the location from Sunshine to Footscray or Williamstown. Clicking on the adjacent tabs can help to review information for specific zones in the department.



3. The ED Real Time Dashboard displays multiple components.



**Key components are:**

- Length of stay: Displays the median length of stay from arrival in the allocated zone.
- Turnaround times: Displays the median turnaround times between 2 events recorded by FirstNet. Currently set at AV Arrival to Offload, Triage to Bed, Arrival, Door To Doctor, Bed Request to Bed Allocation and Doctor Seen to Disposition set.
- Awaiting Admission: Displays the patients who have beds requested and are pending admission.
- Triage Category: Displays patients based on Triage Category. The classification of critical patients is to be defined after a period of using FirstNet in the department.

Note: There are many other metrics and links on Real Time dashboard that you can select and view further patient information. You can also open the patient chart directly from Real Time dashboard when required.

**Important**

- The ED Real Time Dashboard is customisable within the capabilities of the FirstNet program.
- These components will be customised periodically depending on departmental needs.