



EMR Quick Reference Guide

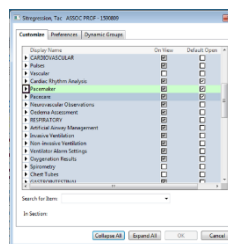
Temporary Pacing Observations

- To document the **Temporary Pacing** information:
 - Go to the Table of Contents, select **Interactive View and Fluid Balance**.
 - Select **Adult System Assessment** and then **Pacemaker**.

- If Pacemaker not visible, go to the **Customize View**.



- Collapse All** and tick **Pacemaker** and **Pacecare**. Ensure **On View** is selected.



- Complete the following fields:

- Type
- Insertion Length
- Output Set
- Output Threshold
- Sensitivity Set
- Sensitivity Threshold
- Rate Setting
- Mode (VVI)
- Connections Secure
- Function
- Insertion Site
- Insertion Site Condition
- Dressing Condition
- Dressing Activity
- Dressing Discharge Description
(leave null if no discharge from site)
- Pulse Distal to Insertion Site
- Side Effects (complete if relevant)

		14:42	14:38
Pacemaker			
Type			Temporary Pacing Wire
Insertion Length	cm		65
Output Set	mA		3
Output Threshold	mA		1
Sensitivity Set	mV		1
Sensitivity Threshold	mV		2
Paced %	%		
# Atrial Wires			
# Ventricular Wires			
Status			
Rate Setting	ppbm		60
Sensitivity Atrial	mV		
Output Atrial	mA		
Sensitivity Ventricular	mV		
Output Ventricular	mA		
Mode			Ventricular demand (VVI)
AV Interval	msec		
Connections Secure			Yes
Function			Pacing appropriately
Insertion Site			Right, Femoral
Insertion Site Condition			Clean, Dry
Dressing Condition			▼ Dry
Dressing Activity			Reinforced
Dressing Discharge Description			
Pulse Distal to Insertion Site			3+ Normal
Side Effects			
Care			
ICD			

- If additional information is required for any of the above fields, enter comments into the **Nursing Shift Notes**.