



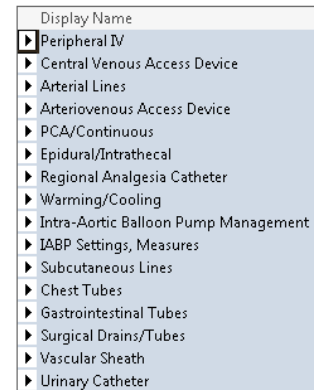
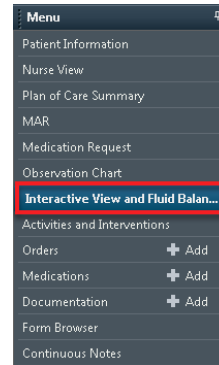
EMR Quick Reference Guide

Clinical Care – Lines & Devices

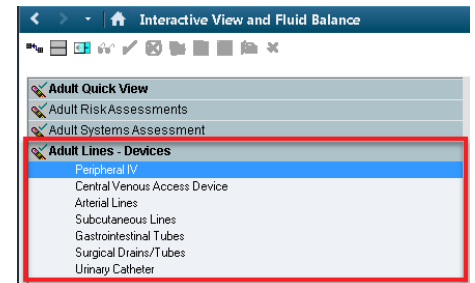
Note: This QRG refers to any of the lines, tubes and devices displayed in this list →

Part 1. To Add a Device:

1. Select the **Interactive View and Fluid Balance** from the Table of Contents (**Menu**) →

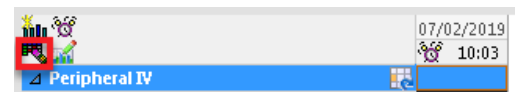


2. Select the **Adult Lines - Devices** band and click on the required device.
 - **Paediatric View** will display **Paediatric Lines – Devices**
 - **Neonatal View** will display **Newborn Lines – Devices – Procedure**

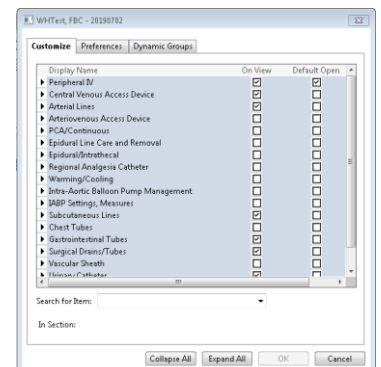


Note: not all devices are visible with the default view (see below).

3. If the required device is not visible: click on the **Customise View** icon and select the required device from the **Customize** list.

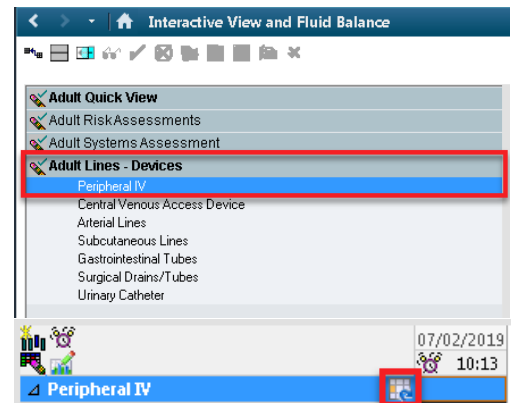


4. Tick the **On View** box to view the device for this patient.
5. Tick the **Default Open** box to view this device for all patients.
6. Click **OK** to add the device to the **Adult Lines – Devices** view.



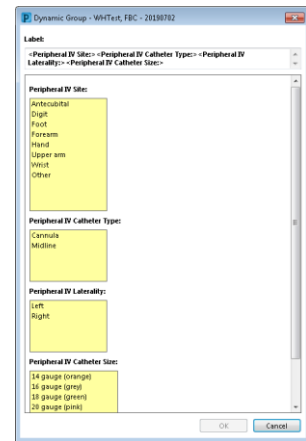
Part 2. To Set-up a Device:

1. Select the required Line or Device →

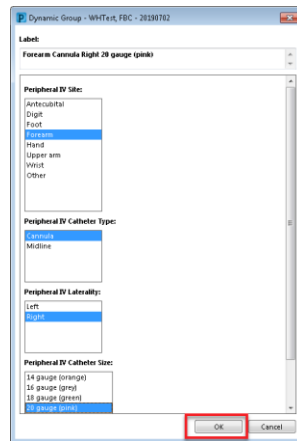


2. Click on the **Dynamic Group** Icon and the **Dynamic Group** Window will open.

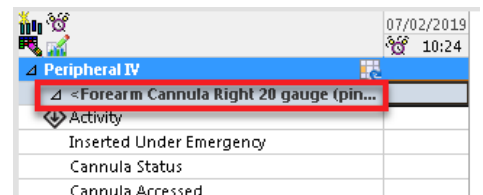
3. Choose the correct line or device and enter the appropriate parameters →



4. Click **OK** to activate the device →



5. The device is now visible in the *Interactive View* →



6. Observations and data can now be entered and signed off with the **Green Tick**.

Activity	10:36	10:24
Inserted Under Emergency		
Performing Procedure		
Indication		
Number of Attempts		1
Procedure Result		Successful
Cannula Status		Flushes e...
Cannula Accessed		Yes
Cannula Care		
Site Condition		No compl...
Phlebitis Score		0
Phlebitis Action		0 - Obser...
Site Care		Cleaned ...
Dressing Condition		Dry
Dressing Activity		
Patient Indicated Response		