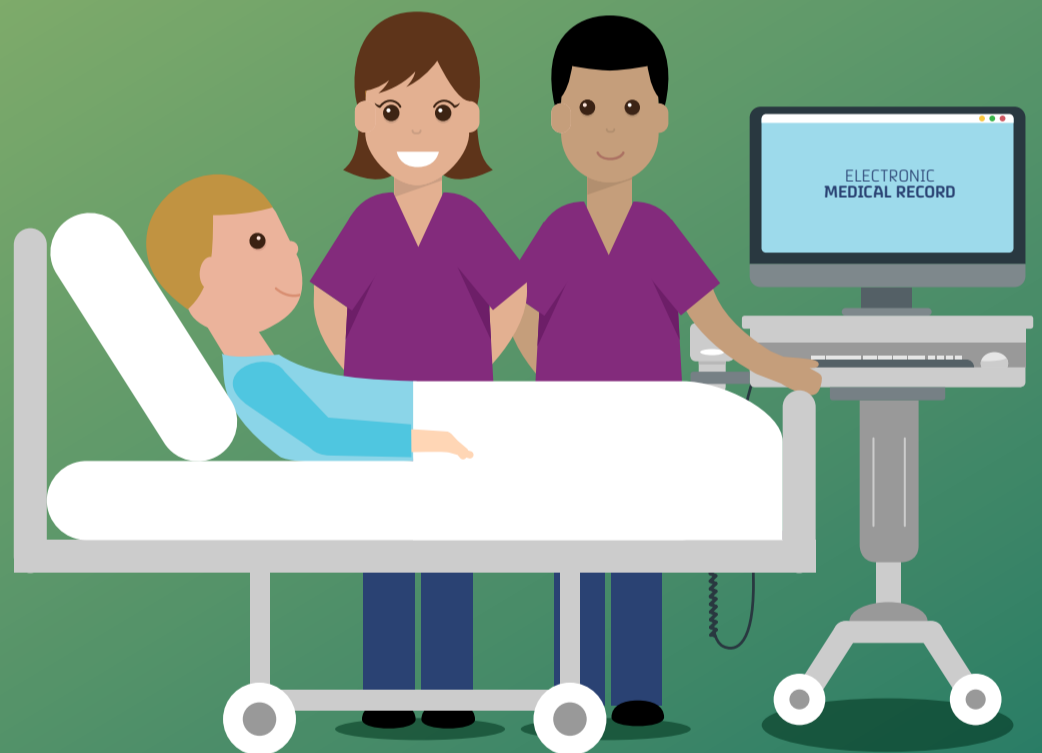


INPATIENT ALLIED HEALTH AND COMMUNITY SERVICES

Caseload Management

- > The EMR is where you will manage your caseload.
- > There will be an electronic list of new referrals and a list of your planned reviews.
 - > You will order your own reviews.
These can be ongoing reviews or you can choose a review date.

- > You will add your handover information including review priority and relevant comments to your review orders.
 - > This information will be visible to your team and is an important communication tool.
- > This forms an online handover for your caseload and will be used for leave cover.



▼ Details for **Dietitian Review (Dietitian Use Only)**

Details | Order Comments | Diagnoses

Urgency: Priority 1

Further Information: Provide education for discharge today

*Reason for Review: Therapeutic Diet Education (...)

*Requested Start Date/Time: 12/09/2018 0700

Choose the reason for review

Choose the priority

Provide brief handover

Choose the date to review the patient, always select 7am